

Stormwater Management

What is Stormwater?

Stormwater is water from rain or snow that flows across our yards, driveways, and streets and into the storm drains and ditches. Often times, stormwater carries with it pollutants such as fertilizer, oil, sediment, and garbage, which is then carried out to our rivers, lakes, and wetlands.



Why Should Stormwater be Managed?

Managing stormwater is an important step in keeping our waters clean and clear. By improving water quality, we are also protecting our natural resources and valuable ecosystems. Stormwater management is also essential to reduce flooding in our streets and yards.

How does Nowthen manage stormwater?

Nowthen has a federal MS4 permit. MS4 stands for Municipal Separate Storm Sewer System. This permit requires the City to develop parameters “...to protect water quality, and to satisfy the appropriate water quality requirement of the Clean Water Act”.

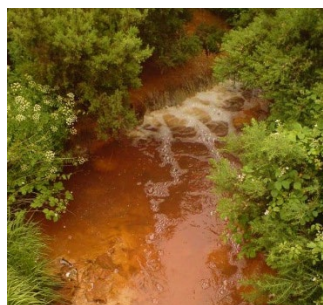
Illicit Discharge

What is Illicit Discharge?

An Illicit Discharge is any contaminant that enters the City of Nowthen’s storm sewer system. Examples of Illicit Discharge include: yard waste, pet waste, trash, sediment from construction sites, chlorinated pool water, paint, commercial car wash wastewater, gasoline or oil, and sewage.

Why is Illicit Discharge harmful?

Stormwater is not treated before entering our lakes, rivers, and streams. All the contaminants in stormwater affect aquatic life. For example, yard waste is a source of phosphorus, which contributes to algal blooms. Sediment clouds our waters, making it difficult for sunlight to reach native aquatic plants. Pet waste contributes to harmful bacteria, and chlorinated pool water can be lethal to some aquatic species.



How do I know an Illicit Discharge is occurring?

Possible indicators of an occurring illicit discharge include: unusual color or cloudiness, strong pungent or musty odor, floating debris, surface scum or foam, oil sheen, and dead fish.

What Should I do if I see Illicit Discharge?

Please call the City of Nowthen at 763-441-1347, and describe what, where, and when you saw the illicit discharge.