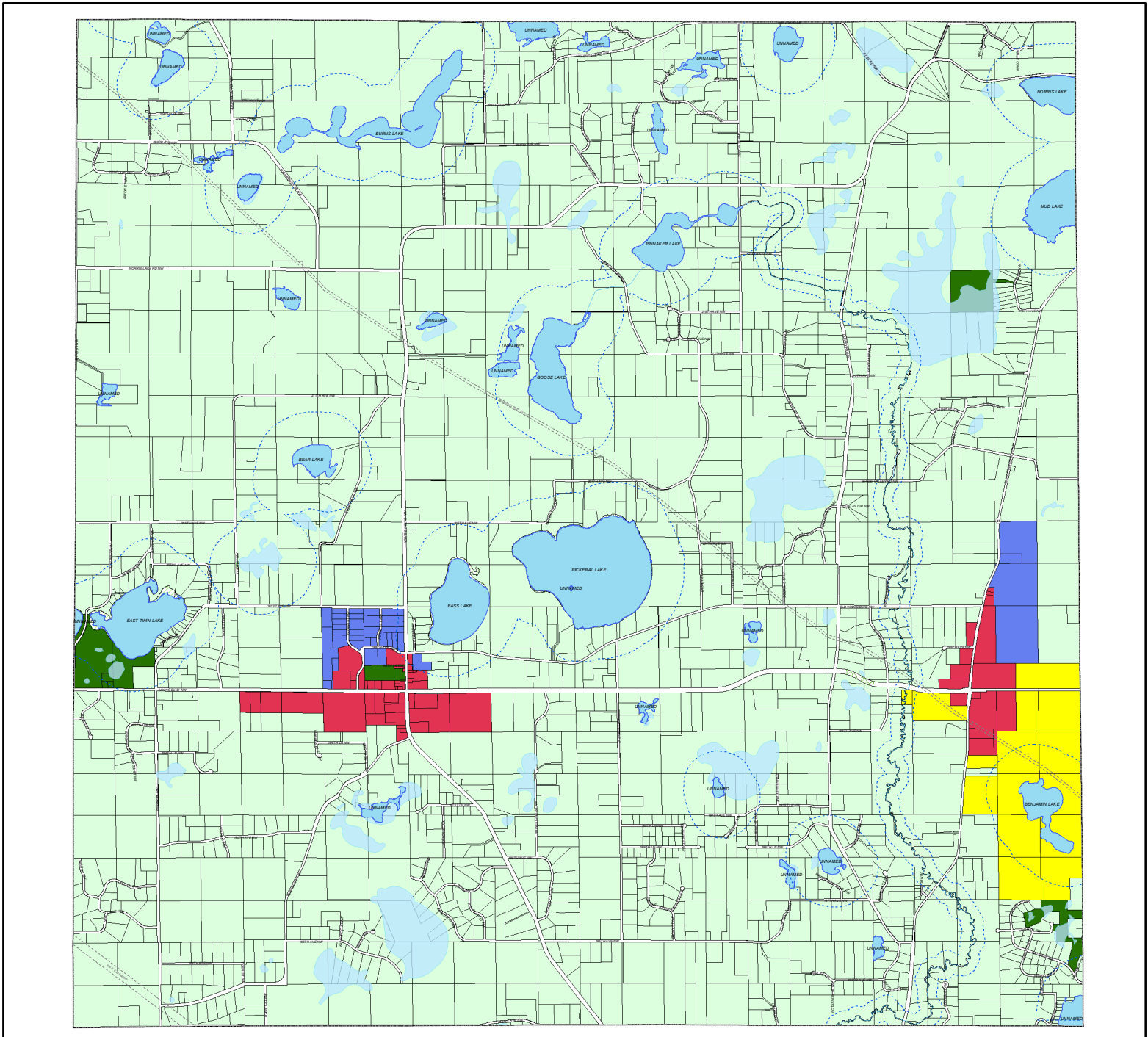


NOTICE: City files must be consulted to verify the zoning classification of property in addition to this map.

# CITY OF NOWTHEN

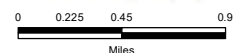
## Zoning Map



### ZONING MAP

- C-1 - Commercial District (365 acres / 1.72%)
- I-1 - Industrial District (225 acres / 1.06%)
- CON - Conservancy District (156 acres / 0.74%)
- RRA - Rural Residential Agriculture (19,897 acres / 94.20%)
- RRT - Rural Residential Transition (478 acres / 2.26%)
- Shoreland Overlay District

**TPC**  
The Planning Company



SOURCES: CITY OF NOWTHEN, ANOKA COUNTY, MN DNR, HAA, TPC

Adopted: Aug 10, 2020  
K:\GIS\Projects\Municipal\NT907\2020 Zoning Map.mxd