

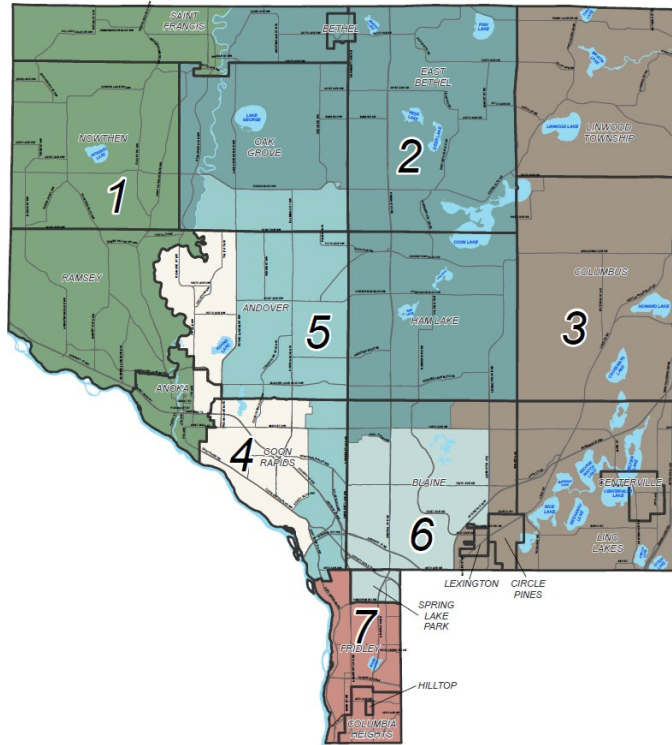
Commissioner District #1				
City/Town	ISD #	Apt	Com/Ind	Res
ANOKA	011	5.62%	7.06%	4.46%
NOWTHEN	011		12.30%	5.35%
	015		12.02%	3.79%
	728		20.00%	6.57%
RAMSEY	011	-20.75%	13.01%	5.94%
	728		14.55%	8.33%
ST. FRANCIS	015	13.18%	12.47%	2.02%
	728		24.36%	

Commissioner District #2				
City/Town	ISD #	Apt	Com/Ind	Res
BETHEL	015	10.96%	6.16%	0.88%
BLAINE	011	3.34%	13.86%	8.43%
EAST BETHEL	015	15.07%	5.30%	0.11%
	831		4.79%	5.83%
HAM LAKE	011	10.55%	10.51%	5.19%
	831		16.52%	9.44%
OAK GROVE	011			4.86%
	015		13.86%	6.15%
ST. FRANCIS	015	-3.45%	6.52%	3.04%

Commissioner District #3				
City/Town	ISD #	Apt	Com/Ind	Res
BLAINE	011		199.56%	10.20%
	012	20.64%	12.39%	8.66%
CENTERVILLE	012	5.27%	4.03%	6.40%
CIRCLE PINES	012	1.59%	8.11%	6.29%
COLUMBUS	831		7.08%	5.25%
LEXINGTON	012	2.01%	10.92%	4.38%
LINO LAKES	012	22.14%	14.37%	5.89%
	624		26.64%	8.27%
	831	4.44%	12.98%	5.60%
LINWOOD	015			375.91%
	831	20.38%	5.64%	8.02%

## Median Percentage Change in Taxes

Payable 2024 vs. Estimated Payable 2025  
Res, Com/Ind, Apt



Commissioner District #4				
City/Town	ISD #	Apt	Com/Ind	Res
ANDOVER	011	354.56%	9.89%	6.92%
	015			6.28%
ANOKA	011	0.56%	7.13%	4.56%
COON RAPIDS	011	4.10%	9.29%	6.26%

Commissioner District #5				
City/Town	ISD #	Apt	Com/Ind	Res
ANDOVER	011	4.39%	8.05%	6.11%
	015		7.09%	6.33%
COON RAPIDS	011	-2.70%	9.32%	5.85%
OAK GROVE	015		9.65%	7.77%

Commissioner District #6				
City/Town	ISD #	Apt	Com/Ind	Res
BLAINE	011	8.99%	11.27%	8.50%
	012	84.15%	13.55%	8.64%
	016	11.82%	11.33%	9.97%
SPRING LAKE PARK	016	15.53%	12.85%	10.92%

Commissioner District #7				
City/Town	ISD #	Apt	Com/Ind	Res
COLUMBIA HEIGHTS	013	-1.96%	9.73%	3.59%
FRIDLEY	011	6.22%	12.47%	12.31%
	013	6.18%	10.00%	2.83%
	014	-1.31%	9.15%	4.33%
	016	2.09%	13.08%	3.95%
HILLTOP	013	15.05%	4.72%	-0.18%



# Stratified % Change & Change in Total Property Tax

Payable 2024 vs. Estimated Payable 2025 Taxes

Residential Property

City/Town	ISD #	Total # of Parcels	Number of Parcels with % Change in Tax					Median % Change
			<= 0%	0 to 10%	10 to 20%	20 to 30%	> than 30%	
ANDOVER	011	10,722	176	9,004	1,166	144	232	6.23%
	015	712	2	632	60	13	5	6.29%
ANOKA	011	4,944	177	4,478	230	27	32	4.48%
BETHEL	015	194	74	94	15	5	6	0.88%
BLAINE	011	14,140	230	9,752	3,318	125	715	8.67%
	012	2,235	89	1,579	527	29	11	8.65%
	016	7,552	92	3,740	3,235	153	332	9.97%
CENTERVILLE	012	1,453	26	1,208	170	30	19	6.40%
CIRCLE PINES	012	1,885	381	1,204	290	7	3	6.29%
COLUMBIA HEIGHTS	013	6,884	1,591	3,830	1,384	57	22	3.59%
COLUMBUS	831	1,804	80	1,489	141	38	56	5.25%
COON RAPIDS	011	20,690	1,617	16,103	2,472	329	169	5.98%
EAST BETHEL	015	3,807	1,835	1,655	159	64	94	0.11%
	831	840	51	517	116	28	128	5.83%
FRIDLEY	011	575	13	128	399	25	10	12.31%
	013	2,457	742	1,322	88	83	222	2.83%
	014	4,520	875	3,183	374	68	20	4.33%
	016	1,068	252	781	30	3	2	3.95%
HAM LAKE	011	5,595	670	4,244	482	67	132	5.19%
	831	443	11	228	170	14	20	9.44%
HILLTOP	013	32	17	13	1	1		-0.18%
LEXINGTON	012	547	34	447	61		5	4.38%
LINO LAKES	012	5,316	132	4,464	584	66	70	5.89%
	624	1,089	21	675	118	99	176	8.27%
	831	1,534	56	1,141	169	45	123	5.60%
LINWOOD	015	21					21	375.91%
	831	2,410	293	1,439	496	91	91	8.02%
NOWTHEN	011	453	5	404	26	11	7	5.35%
	015	583	34	478	36	19	16	3.79%
	728	578	9	464	65	24	16	6.57%
OAK GROVE	011	56	5	44	3	2	2	4.86%
	015	3,512	121	2,763	406	89	133	6.66%
RAMSEY	011	9,100	328	7,188	1,068	96	420	5.94%
	728	1,019	5	686	250	12	66	8.33%
SPRING LAKE PARK	016	1,996	68	870	972	73	13	10.92%
ST. FRANCIS	015	2,631	472	1,922	167	22	48	2.41%
<b>Total</b>		<b>123,397</b>	<b>10,584</b>	<b>88,169</b>	<b>19,248</b>	<b>1,959</b>	<b>3,437</b>	<b>6.41%</b>
<b>% of Total</b>			<b>8.58%</b>	<b>71.45%</b>	<b>15.60%</b>	<b>1.59%</b>	<b>2.79%</b>	

City/Town	ISD #	Number of Parcels With Change in Total Property Tax							Median Tax Change
		<= \$0	\$1 to \$100	\$101 to \$200	\$201 to \$300	\$301 to \$400	\$401 to \$500	> \$500	
ANDOVER	011	176	1,246	3,220	2,610	1,600	602	1,268	\$ 228.50
	015	2	86	274	227	62	25	36	\$ 197.60
ANOKA	011	177	1,859	1,970	497	136	114	191	\$ 116.95
BETHEL	015	74	82	20	5	2	3	8	\$ 13.77
BLAINE	011	230	431	2,524	5,704	2,328	923	2,000	\$ 269.75
	012	89	54	202	737	682	155	316	\$ 302.76
	016	92	184	495	2,425	1,990	652	1,714	\$ 319.25
CENTERVILLE	012	26	74	393	352	229	111	268	\$ 258.80
CIRCLE PINES	012	381	376	361	195	281	180	111	\$ 158.80
COLUMBIA HEIGHTS	013	1,594	1,670	1,256	665	598	511	590	\$ 106.78
COLUMBUS	831	80	258	491	404	234	122	215	\$ 225.61
COON RAPIDS	011	1,619	3,837	6,913	5,541	1,629	537	614	\$ 172.36
EAST BETHEL	015	1,854	972	358	350	171	40	62	\$ 1.42
	831	51	261	271	146	67	15	29	\$ 133.98
FRIDLEY	011	13	24	30	125	277	83	23	\$ 325.14
	013	742	1,160	356	130	39	17	13	\$ 16.74
	014	875	895	869	1,075	524	168	114	\$ 158.45
	016	252	242	318	159	70	16	11	\$ 117.74
HAM LAKE	011	670	1,291	972	1,076	761	373	452	\$ 181.68
	831	11	76	33	59	84	72	108	\$ 356.20
HILLTOP	013	17	10		1		2	2	\$ (5.53)
LEXINGTON	012	34	184	198	67	21	17	26	\$ 132.70
LINO LAKES	012	132	492	1,334	1,223	807	435	893	\$ 254.08
	624	21	44	89	189	236	134	376	\$ 379.50
	831	56	248	403	477	139	56	155	\$ 211.80
LINWOOD	015					21			\$ 388.24
	831	293	502	300	589	413	153	160	\$ 226.63
NOWTHEN	011	5	110	142	119	40	15	22	\$ 172.54
	015	34	240	173	70	25	18	23	\$ 107.72
	728	9	53	104	142	123	63	84	\$ 282.20
OAK GROVE	011	5	4	29	5	7	2	4	\$ 159.97
	015	121	824	917	864	389	155	242	\$ 191.12
RAMSEY	011	328	969	3,109	2,248	1,503	374	569	\$ 203.44
	728	5	48	88	202	251	243	182	\$ 372.04
SPRING LAKE PARK	016	68	209	438	254	267	382	378	\$ 311.07
ST. FRANCIS	015	473	1,013	538	402	91	43	71	\$ 75.00
<b>Total</b>		<b>10,609</b>	<b>20,028</b>	<b>29,188</b>	<b>29,334</b>	<b>16,097</b>	<b>6,811</b>	<b>11,330</b>	<b>\$ 206.00</b>
<b>% of Total</b>		<b>8.60%</b>	<b>16.23%</b>	<b>23.65%</b>	<b>23.77%</b>	<b>13.04%</b>	<b>5.52%</b>	<b>9.18%</b>	



# Stratified % Change & Change in Total Property Tax

Payable 2024 vs. Estimated Payable 2025 Taxes

Commercial, Industrial, Apartment Property

City/Town	ISD #	Total # of Parcels	Number of Parcels with % Change in Tax					Median % Change
			<= 0%	0 to 10%	10 to 20%	20 to 30%	> than 30%	
ANDOVER	011	162	7	92	48	6	9	8.00%
	015	2		2				7.09%
ANOKA	011	562	55	380	114	7	6	6.66%
BETHEL	015	26	2	11	6	7		8.39%
BLAINE	011	315	49	65	166	16	19	12.17%
	012	156	12	40	78	17	9	12.74%
	016	504	111	119	218	40	16	11.35%
CENTERVILLE	012	67	6	38	8	11	4	4.04%
CIRCLE PINES	012	25	2	14	9			6.93%
COLUMBIA HEIGHTS	013	360	90	151	109	8	2	7.73%
COLUMBUS	831	96	6	54	22	6	8	7.08%
COON RAPIDS	011	795	94	379	241	47	34	8.93%
EAST BETHEL	015	198	14	101	53	6	24	6.43%
	831	13		13				4.79%
FRIDLEY	011	33	2	15	6	2	8	9.27%
	013	126	14	65	35	4	8	7.17%
	014	332	104	123	67	17	21	6.45%
	016	227	25	72	85	19	26	12.45%
HAM LAKE	011	312	15	138	63	66	30	10.51%
	831	7		2	2	1	2	16.52%
HILLTOP	013	53	4	25	23		1	8.49%
LEXINGTON	012	62	11	24	24	2	1	7.46%
LINO LAKES	012	115	13	29	28	15	30	14.67%
	624	26	6	3	3	3	11	26.64%
	831	80	19	20	15	12	14	11.25%
LINWOOD	831	13	1	5	3	3	1	11.34%
NOWTHEN	011	2			2			12.30%
	015	9	2	2	2		3	12.02%
	728	40	3	12	5	15	5	20.00%
OAK GROVE	015	55	12	11	15	6	11	13.47%
RAMSEY	011	331	63	58	145	53	12	12.65%
	728	24	2	7	10	4	1	14.55%
SPRING LAKE PARK	016	284	30	69	142	39	4	12.94%
ST. FRANCIS	015	113	8	50	32	16	7	9.57%
	728	1				1		24.36%
<b>Total</b>		<b>5,526</b>	<b>782</b>	<b>2,189</b>	<b>1,779</b>	<b>449</b>	<b>327</b>	<b>9.21%</b>
<b>% of Total</b>			<b>14.15%</b>	<b>39.61%</b>	<b>32.19%</b>	<b>8.13%</b>	<b>5.92%</b>	

City/Town	ISD #	Number of Parcels With Change in Total Property Tax							Median Tax Change
		<= \$0	\$1 to \$100	\$101 to \$200	\$201 to \$300	\$301 to \$400	\$401 to \$500	> \$500	
ANDOVER	011	7	14	8	1	6	1	125	\$ 1,999.96
	015							1	\$ 934.51
ANOKA	011	55	64	50	31	45	32	285	\$ 517.48
BETHEL	015	2	9	3	4			1	\$ 177.73
BLAINE	011	49	10	4	5	10	14	223	\$ 1,887.30
	012	12	11	4	2	5	3	119	\$ 3,743.09
	016	111	17	12	14	7	3	340	\$ 2,260.58
CENTERVILLE	012	6	13	6		3	1	38	\$ 819.74
CIRCLE PINES	012	2	2	2	1			1	\$ 1,319.46
COLUMBIA HEIGHTS	013	90	23	35	22	10	10	170	\$ 387.31
COLUMBUS	831	6	8	3	6	4	3	66	\$ 1,267.03
COON RAPIDS	011	94	58	37	28	19	23	536	\$ 1,317.62
EAST BETHEL	015	16	61	9	8	3	5	96	\$ 436.16
	831		6	4				2	\$ 134.02
FRIDLEY	011	2		2	2	1	2	24	\$ 1,094.88
	013	14	13	4	4	1	1	89	\$ 805.99
	014	104	19	11	12	17	8	161	\$ 454.65
	016	25	12	13	8	4	3	162	\$ 1,892.22
HAM LAKE	011	15	31	26	22	8	6	204	\$ 1,361.95
	831						1	6	\$ 828.76
HILLTOP	013	5	10	6	5	2	2	23	\$ 359.50
LEXINGTON	012	11	6	5	5	2	4	29	\$ 423.47
LINO LAKES	012	13	3	5	9	4	3	78	\$ 1,247.12
	624	6	3	1				16	\$ 6,587.75
	831	19	1	1	3	4	2	50	\$ 1,256.96
LINWOOD	831	1	2		2			8	\$ 896.38
NOWTHEN	011							2	\$ 1,059.76
	015	2			1	1		5	\$ 978.50
	728	3	7					30	\$ 1,974.23
OAK GROVE	015	12	5	5	4	1	1	27	\$ 482.38
RAMSEY	011	63	28	8	5	6	2	219	\$ 1,603.20
	728	2	2	1	2	1	1	15	\$ 1,359.08
SPRING LAKE PARK	016	30	12	38	31	6	12	155	\$ 814.77
ST. FRANCIS	015	8	16	13	4	6	6	60	\$ 563.42
	728							1	\$ 425.28
<b>Total</b>		<b>785</b>	<b>466</b>	<b>316</b>	<b>241</b>	<b>177</b>	<b>153</b>	<b>3,388</b>	<b>\$ 995.00</b>
<b>% of Total</b>		<b>14.21%</b>	<b>8.43%</b>	<b>5.72%</b>	<b>4.36%</b>	<b>3.20%</b>	<b>2.77%</b>	<b>61.31%</b>	



## Estimated % Change in 2025 Proposed Tax

City/Town	ISD #	Pay 2024 Median Estimated Mkt Val	Pay 2025 Median Estimated Mkt Val	% Change Median Estimated Mkt Val	Estimated % Change in Tax on Median Residential Value					Estimated Change from 2024 Total Tax
					County Portion	City/Town Portion	School Portion	Other Portion	Total Change	
ANDOVER	11	\$ 396,400	\$ 394,600	-0.45%	14.38%	9.54%	-4.72%	7.53%	5.63%	\$211
	15	\$ 396,400	\$ 394,600	-0.45%	14.38%	9.45%	-13.18%	-11.82%	3.94%	\$131
ANOKA	11	\$ 293,800	\$ 288,800	-1.70%	11.57%	8.44%	-6.39%	0.13%	3.79%	\$108
BETHEL	15	\$ 253,100	\$ 254,200	0.43%	13.73%	1.92%	-13.39%	-3.12%	0.84%	\$19
BLAINE	11	\$ 331,300	\$ 334,700	1.03%	15.69%	15.17%	-3.44%	10.18%	8.49%	\$270
	12	\$ 331,300	\$ 334,700	1.03%	15.69%	15.17%	1.57%	2.77%	9.11%	\$321
	16	\$ 331,300	\$ 334,700	1.03%	15.69%	15.17%	1.17%	10.19%	9.89%	\$323
CENTERVILLE	12	\$ 351,550	\$ 363,350	3.36%	18.95%	1.42%	4.20%	3.57%	6.47%	\$260
CIRCLE PINES	12	\$ 285,500	\$ 277,300	-2.87%	9.86%	2.55%	-3.00%	-5.62%	1.73%	\$56
COLUMBIA HEIGHTS	13	\$ 271,800	\$ 270,200	-0.59%	13.09%	4.23%	-6.20%	6.82%	2.85%	\$101
COLUMBUS	831	\$ 414,100	\$ 416,300	0.53%	15.76%	0.21%	1.05%	0.76%	4.28%	\$188
COON RAPIDS	11	\$ 290,750	\$ 296,600	2.01%	16.46%	6.17%	-2.63%	7.46%	5.78%	\$165
EAST BETHEL	15	\$ 351,700	\$ 352,450	0.21%	14.83%	-0.72%	-12.79%	-8.38%	0.21%	\$6
	831	\$ 351,700	\$ 352,450	0.21%	14.83%	-0.72%	0.40%	-7.93%	3.75%	\$123
FRIDLEY	11	\$ 284,700	\$ 288,900	1.48%	15.70%	2.02%	-3.19%	7.26%	3.79%	\$114
	13	\$ 284,700	\$ 288,900	1.48%	15.70%	2.02%	-3.95%	0.74%	2.94%	\$92
	14	\$ 284,700	\$ 288,900	1.48%	15.70%	2.02%	1.07%	0.33%	4.31%	\$150
	16	\$ 284,700	\$ 288,900	1.48%	15.70%	2.02%	1.33%	0.93%	4.87%	\$149
HAM LAKE	11	\$ 434,850	\$ 447,000	2.79%	19.29%	1.97%	-1.21%	10.38%	6.43%	\$233
	831	\$ 434,850	\$ 447,000	2.79%	19.29%	1.97%	3.86%	10.66%	8.46%	\$311
HILLTOP	13	\$ 117,300	\$ 115,900	-1.19%	3.70%	-11.15%	-10.55%	-11.08%	-8.81%	-\$139
LEXINGTON	12	\$ 287,300	\$ 285,700	-0.56%	13.03%	3.29%	-0.43%	-1.37%	3.77%	\$120
LINO LAKES	12	\$ 396,600	\$ 394,600	-0.50%	14.30%	8.16%	0.23%	-0.97%	6.05%	\$264
	624	\$ 396,600	\$ 394,600	-0.50%	14.30%	8.16%	1.18%	-1.25%	6.20%	\$283
	831	\$ 396,600	\$ 394,600	-0.50%	14.30%	8.16%	-0.15%	-1.51%	6.46%	\$257
LINWOOD TOWNSHIP	15	\$ 352,000	\$ 356,400	1.25%	16.19%	5.95%	-11.80%	-1.58%	3.19%	\$82
	831	\$ 352,000	\$ 356,400	1.25%	16.19%	5.95%	1.54%	-0.64%	7.00%	\$205
NOWTHEN	11	\$ 446,050	\$ 448,200	0.48%	16.64%	5.91%	-3.42%	-0.68%	5.17%	\$192
	15	\$ 446,050	\$ 448,200	0.48%	16.64%	5.91%	-11.74%	-1.41%	3.39%	\$112
	728	\$ 446,050	\$ 448,200	0.48%	16.64%	5.91%	1.47%	-0.52%	6.29%	\$277
OAK GROVE	11	\$ 402,700	\$ 403,100	0.10%	15.11%	13.62%	-4.15%	-2.11%	6.40%	\$218
	15	\$ 402,700	\$ 403,100	0.10%	15.11%	13.62%	-12.64%	-2.82%	4.84%	\$147
RAMSEY	11	\$ 342,000	\$ 346,700	1.37%	16.28%	9.67%	-3.04%	1.66%	6.83%	\$241
	728	\$ 342,000	\$ 346,700	1.37%	16.28%	9.67%	1.75%	1.83%	7.56%	\$306
SAINT FRANCIS	15	\$ 300,100	\$ 303,500	1.13%	15.45%	5.27%	-12.26%	-2.76%	3.29%	\$99
	728	\$ 300,100	\$ 303,500	1.13%	15.45%	5.27%	1.25%	-2.25%	5.57%	\$208
SPRING LAKE PARK	16	\$ 287,400	\$ 284,900	-0.87%	12.60%	16.64%	-1.26%	-1.23%	8.48%	\$248

